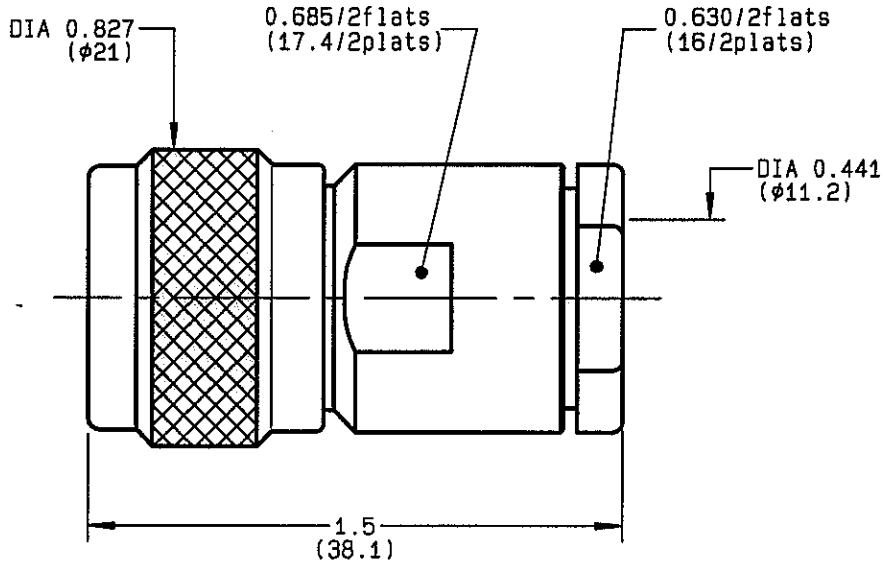


**STRAIGHT PLUG CLAMP TYPE
CABLE 10+11/50+75**

R161.020.050
SERIES N



| | | |
|---------------------------------|----------------------------------|---|
| NOMINAL IMPEDANCE | 50 Ω | CABLES : KX 13 |
| FREQUENCY RANGE | 0-11 GHz | KX 4 |
| TEMPERATURE RATING | -55/+155 °C | KX 8 |
| V.S.W.R | 1.30 + x F(GHz)Maxi | RG 11 |
| RF INSERTION LOSS | .048 √F(GHz) dB Maxi | RG 144 |
| VOLTAGE RATING | 1400 Veff Maxi | RG 213 |
| DIELECTRIC WITHSTANDING VOLTAGE | 2500 Veff Mini | RG 214 |
| INSULATION RESISTANCE | 5000 M ΩMini | RG 216 |
| HERMETIC SEAL | NA Atm.cm ³ /s | RG 225 |
| LEAKAGE (pressurized only) | NA | OTHERS CHARACTERISTICS |
| MECHANICAL DURABILITY | 500 Cycles | CABLE RETENTION 300 N Mini |
| WEIGHT | 49.4 gr | CENTER CONTACT RETENTION |
| SPECIFICATION | | Axial force - mating end NA N Mini |
| | | Axial force - opposite end NA N Mini |
| | | Torque NA cm.N Mini |
| | | RECOMMENDED TORQUES |
| | | Mating 130 cm.N |
| | | Panel nut NA cm.N |
| | | Clamp nut 800 cm.N |

| CONNECTOR PARTS | MATERIALS | FINISH (all values are given in micrometers) |
|-----------------|-----------------|--|
| BODY | BRASS | BLACK-CHROMIUM 0.2 OVER NICKEL 2 |
| OUTER CONTACT | BRASS | BBR 2 |
| CENTER CONTACT | BRASS | GOLD 0.5 OVER NICKEL 2 |
| INSULATOR | PTFE | - |
| GASKET | SILICONE RUBBER | - |
| OTHERS PIECES | BRASS | BLACK-CHROMIUM 0.2 OVER NICKEL 2 |

| | | |
|-------------------------|-----------------------------------|--------------------------------------|
| ISSUE 9809H01 | CREATION DATE 06-MAY-93 | FILE PART-NUMBER EPC 96-07 |
|-------------------------|-----------------------------------|--------------------------------------|



BONDMIN.

The information given here is subject to change without notice.
Design changes may be in order to improve the product.

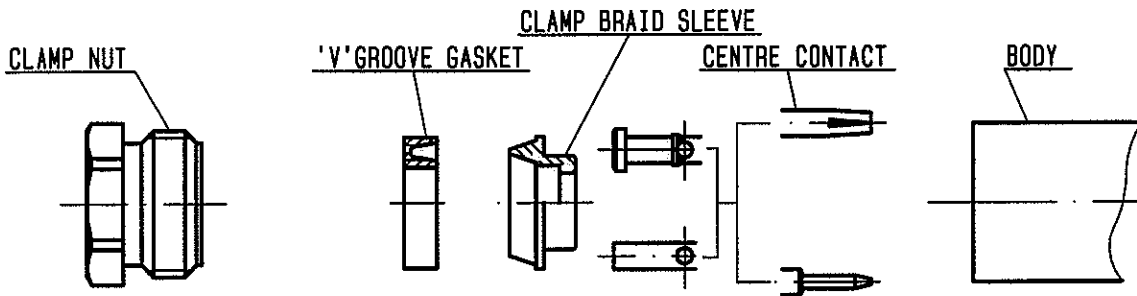
Connect to the future



RADIALL®

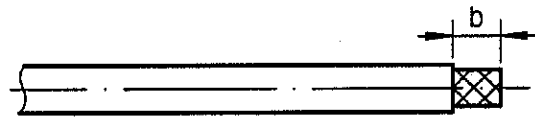
R161.020.050

ISSUE 9809H01 SERIES N



①

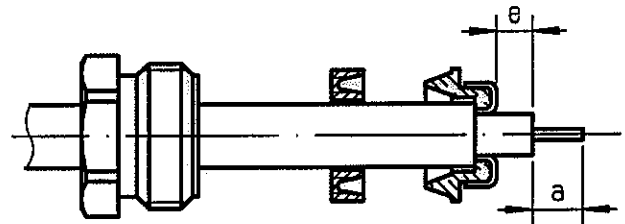
Strip the cable .



| Stripping | a | b | c | d | e |
|-----------|-------|-------|---|---|-------|
| inch | 0.197 | 0.335 | 0 | 0 | 0.059 |
| mm | 5 | 8.5 | | | 1.5 |

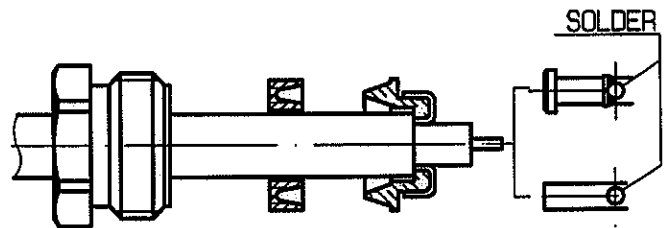
②

Slide the clamp nut and the 'V' groove gasket onto the cable .
 Slide clamp braid sleeve over braid .
 Fold back braid and trim off surplus braid .
 Trim back dielectric as shown .



③

Solder the cable inner conductor into centre contact .



④

Screw sub-assembly into the connector body .
 (recommended coupling torque 70.87 in.lb)

